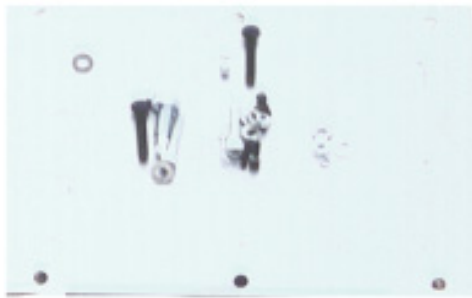


Hinged Strip Magnet

High Intensity – Rare Earth

Datasheet No. 508



Rare earth Hinged Strip Magnets are versatile and can be used in various processes. These units are usually installed above transfer conveyors and vibratory feeders to attract 'tramp' type contamination and any loose machinery that has fallen off during manufacturing or packaging stages.

The unit has two rows of magnetic material running along its length. They generate high intensity magnetic flux fields, which reach approx. 3.4" from the units front face. The unit is designed so that magnetism is only present on one face ensuring that no surrounding sensitive process machinery is affected.

'Tramp' contamination can be attracted from the conveyor surface even when trapped underneath the product e.g. biscuit etc. The unit's full stainless steel construction means water and chemical clean down can be carried out.

Cleaning

Simply place the supplied collection tray underneath the magnet and hinge the magnetic pack away. This releases all attracted contamination into the tray.

Any attracted machinery parts can be quickly identified and corrective maintenance carried out.

Suitable Products

All conveyed products less than 3.4" thick.

Suitable Locations

Above transfer belt conveyors and vibratory feeders.

Benefits

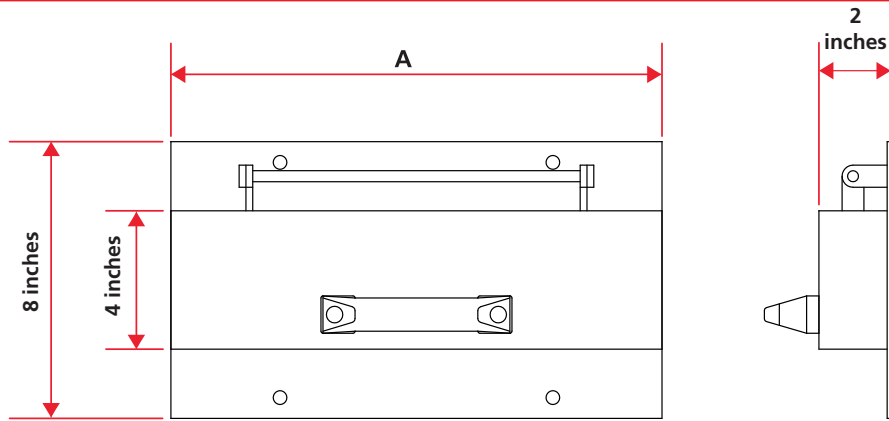
- Suitable for wash down
- High collection capacity
- Removes 'tramp' sized contaminants
- Rare earth deep magnetic field
- Easy to clean

Category

Primary protection - tramp.



Technical Data



Product Information

Part Number	A inches	Weight kg	Weight lb
HSM300	12	9.5	21
HSM400	16	12.0	26
HSM500	20	15.5	34
HSM600	24	19.0	42
HSM700	28	23.5	52
HSM800	32	27.0	60
HSM900	36	30.5	67.2
HSM1000	40	36.0	79

Performance

Magnetic performance	4,000 Gauss
Performance reading	On magnetic front face
Magnetic field depth	4inches – Using 0.19inches Ø1inches long mild steel test piece
Magnetic material	Rare earth neodymium iron boron
Magnet grade	N35 – Inspected and confirmed via hystero-graph prior to use
Temperature	-4°F / +194°F

Materials

Housing	304 grade stainless steel
Other Parts	304 grade stainless steel
Surface finish	Brushed to 2.0µm

Options

- High temperature samarium cobalt magnetic material, +482°F
- Length up to 79 inches long
- 316 grade stainless steel
- ATEX certified
- Ceramic magnetic material
- Pharmaceutical specification

If you have any more questions, require technical assistance or would like a quotation, please contact us.

www.eclipsetoolsinc.com

Eclipse Tools North America Inc.

442 Millen Road, Unit 9, Stoney Creek, Ontario, L8E 6H2, Canada

T 1-800-260-2124 F 1-800-260-1410

sales@eclipsetoolsinc.com www.eclipsetoolsinc.com

While every effort has been made to ensure the accuracy of the information in this publication please note that specifications may change without notice.

