

Liquid Filter Magnet

High Intensity – Rare Earth

Datasheet No. 518



Standard Design



Bespoke Design

The Eclipse Magnetics high intensity Liquid Filter magnetic separator has been designed to operate in pressurised transfer lines to provide protection against ferrous and para-magnetic contamination.

The housing comprises a vessel, magnetic lid assembly and band clamp, which secures the unit together. The filter is available in two versions, single wall and double wall (jacketed for heated pipelines).

The filter can be used in any line that processes liquids at all viscosity levels and can be installed at any angle from vertical to horizontal. A common installation location is tanker loading and discharge to inspect outgoing and incoming materials.

The filter can be supplied to suit various processing volumes, pressures, temperatures and specifications.

Cleaning

The filter uses the Eclipse Magnetics 'Easy Clean' system.

To clean, simply release the quick release band clamp, remove the contaminated cartridge from the housing and remove the magnetic cores from the tube assembly. All attracted contamination can be easily removed allowing for inspection or further analysis.

Suitable Products

Chocolate, molasses, jam, syrup, juice, sauce, pastes, soup, pickles, spreads, beverages etc.

Suitable Locations

All, vertical, horizontal or angled.

Benefits

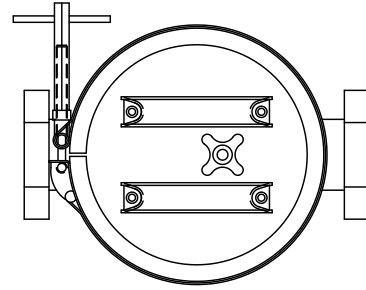
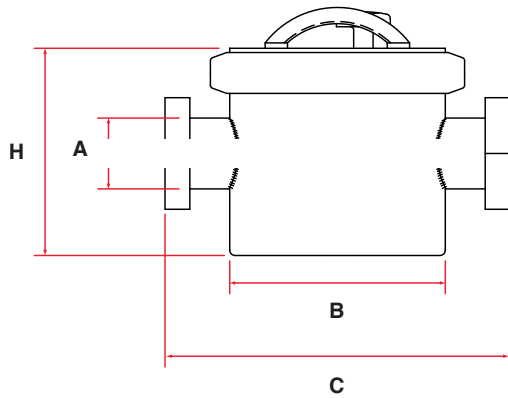
- Easy to clean
- Removes sub-micron sized contaminants
- Meet audit requirements
- Rare earth 9,000 Gauss
- No consumables
- No pressure drop

Category

Secondary protection - fines.



Technical Data



Product Information

Part Number	Spout dia. A inches	Dia. B inches	Length C inches	Height H inches	No. Rods	Weight kg	Weight lb
Single wall							
ILF200 / 50	2	8	14	8	7	22	49
ILF200 / 75	3	8	14	8	7	22	49
ILF300 / 50	2	12	18	12	9	36	79
ILF300 / 75	3	12	18	12	9	36	79
ILF300 / 100	4	12	18	12	9	36	79
Jacketed							
ILF200 / 50 / J	2	8	14	8	7	22	49
ILF200 / 75 / J	3	8	14	8	7	22	49
ILF300 / 50 / J	2	12	18	12	9	36	79
ILF300 / 75 / J	3	12	18	12	9	36	79
ILF300 / 100 / J	4	12	18	12	9	36	79

Performance

Magnetic performance 9,000 Gauss high strength
Performance reading On tube surface
Magnetic material Rare earth neodymium iron boron
Magnet grade N45 – Inspected and confirmed via hysteresis graph prior to use
Temperature -4°F / +194°F
Pressure + / - 87psi

Materials

Housing 316 grade stainless steel
Tubing 316 grade stainless steel – aerospace quality
Other Parts 316 grade stainless steel
Surface finish Brushed internally / externally to 1.2µm
Sealing Silicon rubber O-ring, brown
Band Clamp 304 grade stainless steel

Options

- Stainless steel handles
- High temperature samarium cobalt magnetic material +482°F
- 11,000 Gauss fixed design
- Overpressure to 435psi
- 304 grade stainless steel
- Pharmaceutical specification
- ATEX certified
- Flanged to suit
- Safety relay switch

If you have any more questions, require technical assistance or would like a quotation, please contact us.

www.eclipsetoolsinc.com

Eclipse Tools North America Inc.

442 Millen Road, Unit 9, Stoney Creek, Ontario, L8E 6H2, Canada

T 1-800-260-2124 F 1-800-260-1410

sales@eclipsetoolsinc.com www.eclipsetoolsinc.com

While every effort has been made to ensure the accuracy of the information in this publication please note that specifications may change without notice.

