

PATENTED DESIGN

# Automag



**Self-purging high intensity magnetic filters for high flow, high contamination industrial applications.**

## Self-Purging Magnetic Filter

The Automag has two flow chambers. Fluid enters the inlet chamber where primary filtration takes place. The partly treated fluid flows into a second chamber where it is slowed down so that the final filtration treatment can take place. It then returns to the process.

Installing Automag will improve your manufacturing effectiveness and reduce operator intervention.

Using fully filtered fluid, free from micron sized particles will:

- Improve surface finish
- Extend tool/wheel life
- Improve fluid flow
- Cut costs on scrap reduction
- Reduce downtime

All applications, which use pumped cutting fluids will benefit from using this equipment.



## Benefits

- Double magnetic length
- High collection capacity
- Removes micron sized contamination
- Self-purging
- 'Rare Earth' high intensity magnetic material
- Compact
- No maintenance

## Typical Applications

- Grinding
- Honing
- Milling
- Fine finishing

## Cleaning

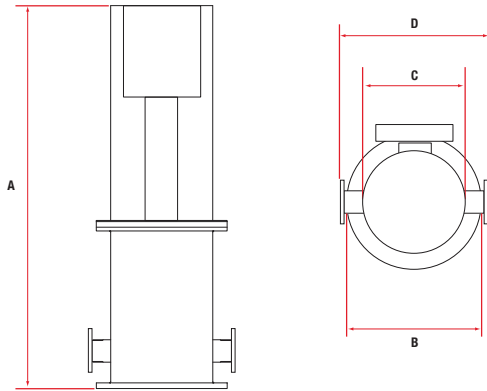
A signal from your control system activates the outlet valve (not included) so fluid is redirected to a purge tank or reclamation unit (available as an option), then the centrally positioned pneumatic cylinder withdraws the magnetic elements from the filter.

When the contamination has been purged the magnetic elements are reinserted and the outlet valve is returned to position, bringing the unit back online. The complete cleaning cycle take 10-15 seconds depending on fluid type and filter location.

# Installation Options

Pre and post fluid holding tank, machine or process.

## Technical Data



Product number	Max. flow rate	Contamination capacity	Max. operating pressure	Connection	Dimensions inches			
	gallons/min.				lbs	psi	Flanged "	A
AMC	52	5	145	1½"	28.7	9.0	7.9	11.8
AM6	119	15	145	2"	41.9	15.5	10.8	17.7
AM12	238	30	145	3"	45.0	22.2	15.9	24.4
METRIC	ltrs/min.	kgs	bar	Flanged "	mm			
AMC	200	2.5	10	1½"	729	229	200	300
AM6	450	7.0	10	2"	1065	394	275	450
AM12	900	14.0	10	3"	1143	564	405	620

## Performance

<b>Magnetic Performance</b>	AMC 6,000 gauss, AM6 & AM12 9,000 gauss
<b>Performance Reading</b>	On tube surface
<b>Magnetic Material</b>	Rare Earth Neodymium Iron Boron
<b>Magnet Grade</b>	N45 - Inspected & confirmed via hystergaph prior to use
<b>Temperature</b>	41°F– 158°F (5°C– 70°C)

## Materials

<b>Filter Body</b>	304 Grade Stainless Steel, powder coated white
<b>Filter Cover</b>	304 Grade Stainless Steel, powder coated silver
<b>Control Box</b>	Aluminum, powder coated white
<b>Pneumatic Cylinder</b>	Festo
<b>Solenoid Valve</b>	ASCO
<b>Limit Switch</b>	Proximity sensors, RS origin

## Options

- Simple timer control box
- Purge valve arrangement
- Super high flow rate systems
- Pre-programmed PLC controls
- Complete mounting skid arrangement
- Purge fluid collection tank and reclaim system