

Optimag P Lifting Magnet (PSPM)

At A Glance

- ✓ Pneumatically switched permanent magnet
- ✓ Ideal for lifting thin magnetic materials
- ✓ Lifts up to 59kg (130lb) WWL
- ✓ Multiple units can be used to lift larger thin plates or irregular shapes

Pneumatically switched permanent magnet supplied as a modular system in four standard sizes. Ideal for thin plate from 2mm thickness.

The circular PSPM have rubber rings to provide slide resistance and to limit risks of surface damage. The PSPM units, subject to enough air pressure and air volume can be connected to operate together (with suitable spreader beam) to pick up larger surface area parts. For items such as bread tins, palletisers and depalletisers, please contact us for a customised solution.

Custom rectangular version available upon request.

Alternative Products:

- Optimag E (ESPM)
- Ultralift TP
- Magnetic Palletiser/Depalletiser
- Ultralift Plus
- Baking Tray Handling System



Benefits

- Ideal for thin or uneven surfaces, perforated pressings and thin steel
- Fail-safe operation, powered by air supply
- Can hold through air gaps such as packaging and paint layers
- No damage to parts being handled (rubber strip on each round PSPM)
- Ideal for materials 2mm or thicker
- Simple to extend existing systems (subject to air supply)
- Excellent weight to performance ratio
- Low maintenance
- Single point fixing

Performance

Air requirements	Only required during switching
Air pressure	1.5 Bar minimum – 2 Bar maximum
Air connection	1/8" BSP
Temperature	Maximum + 50°C (122°F)

Materials

Outer shell material	Aluminium blue anodised finish
Front working face	Stainless steel with rubber protection ring
Magnet material	Rare earth Neodymium Iron Boron

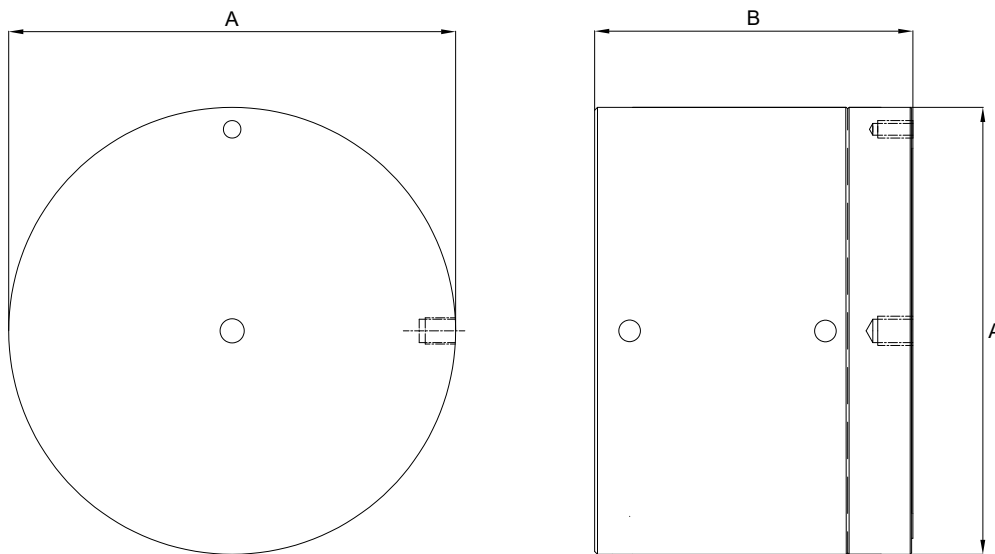
Maintenance

- As part of LOLER, PUWER, ASME B30.20 and H&S advice, you need to regularly inspect Lifters to ensure they are not damaged and are suitable for lifting the parts
- Annual inspection is a minimum requirement
- We can carry out on site lifter testing
- We can inspect and service / repair our Lifters for you

Suitability

Suitable Products	Ferrous materials (e.g. mild steel)
Suitable Location	Example - factory shopfloor / production line and robotics

Optimag P Lifting Magnet (PSPM)



Product Number	Dimensions (mm)		Self Weight (kg)	Flat Plate/ Section WLL* (Kg)
	A	B		
Circular				
PSPM80C	80	78.5	1	8.5
PSPM100C	100	82.5	1.5	18.5
PSPM125C	125	93	3	29
PSPM150C	150	109	4.8	59

*Please note that the Working Load Limit (WLL) is now used instead of Safe Working Load (SWL). The Lifting force values shown include the 3:1 safety factor and have been based on using the stated thin plate thickness's of high magnetic permeability steel with no air gaps. Air gaps, thinner materials and materials with lower magnetic permeability can all reduce the pull force a lifter can actually achieve. Please note that the achievable pull force is reduced when lifting thinner mild steel plate. You must follow LOLER, PUWER, ASME B30.20 and H&S advice. You should always check for a downrate, factor in any downrate to then perform a safety lift, then perform a full lift only after a successful safety lift.

Other products available



Ultralift Plus



Ultralift TP



Optimag E



Ultralift E